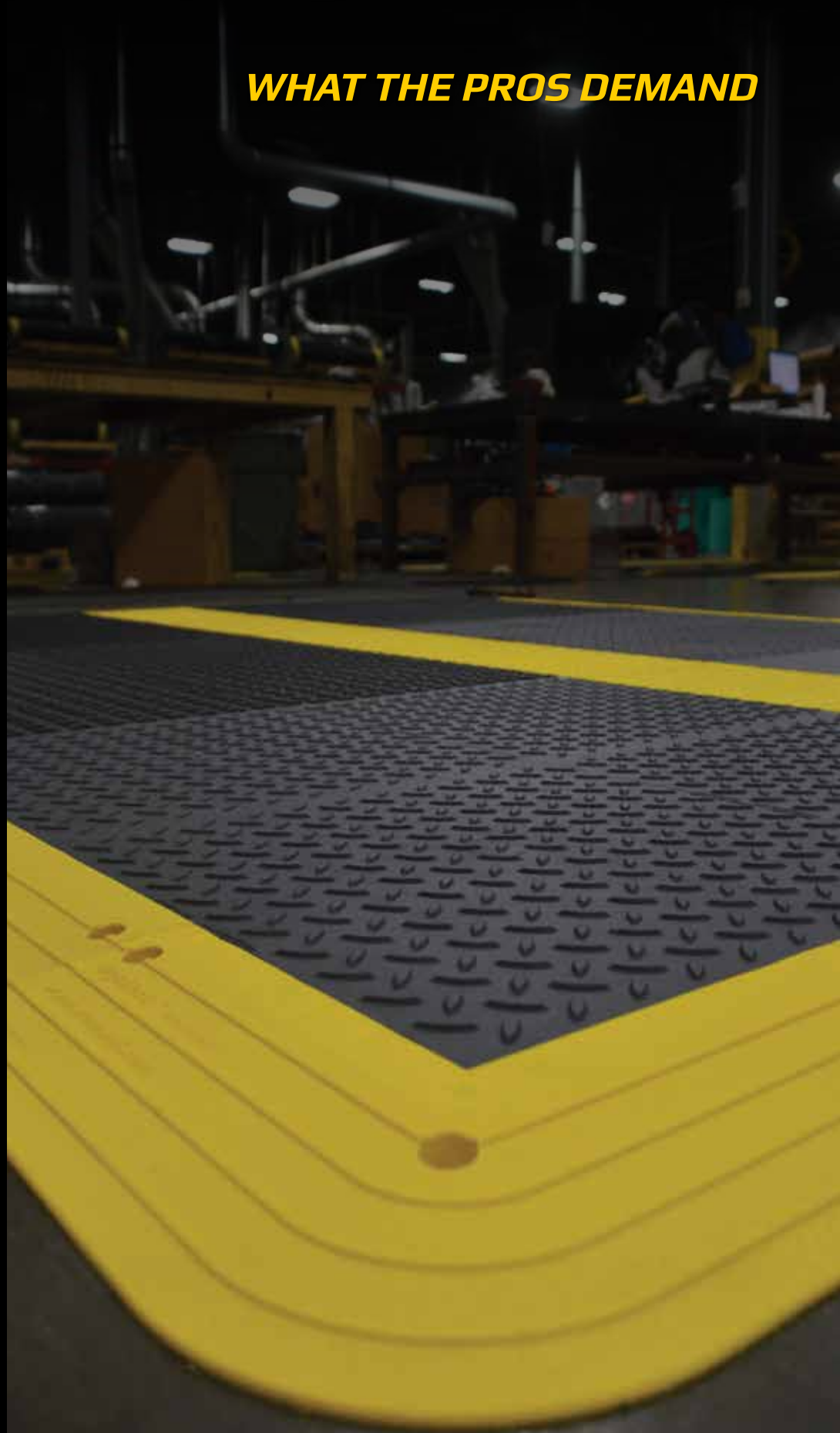


**ERGODECK®
MODULAR
FLOORING**

WHAT THE PROS DEMAND



WEARWELL®

It's Not by Chance, But by Design, That ErgoDeck® Continually Delivers!



Your team is geared up, coached up and trained up, but are they up to the challenge of performing on hard, unforgiving concrete?

All across the globe, Industrial arenas like yours agree- ErgoDeck® is the optimum flooring solution. Like you, they look to improve safety, productivity, performance and the health of their teams.

POSITIVE INTERLOCKING SYSTEM

Our 100% secure patented interlocking system prevents tiles from separating yet zips apart for reconfiguration.

VARIETY

Choose the surface pattern, compound and color that suits your unique needs.

EASY TO INSTALL

Large 18" x 18" (46 cm x 46 cm) tiles cover large areas quickly.

CUSTOMIZATION

Tiles can be customized in 3" (8 cm) increments to create unique lengths, widths and shapes.

VALUE

Easily replace single tiles or sections as needed. This keeps replacement costs down!

WALL-TO-WALL ERGODECK®

All styles of ErgoDeck® connect together. So go ahead, mix and match and create a wall-to-wall ErgoDeck masterpiece!

UNIVERSAL EDGING SYSTEM

The 6" (15 cm) wide safety ramps work on our entire line of ErgoDeck tiles.

IMPROVE PRODUCTIVITY

Tiles provide structural support and impact absorption for healthier and more productive employees, even in multi-shift operations.

LIMITED-LIFETIME WARRANTY

Popular ErgoDeck Styles carry a limited-lifetime warranty.



ErgoDeck® MAX

Look for product family 598, 599 & 600

Compound: General Purpose PVC and Nitricell® Sponge join forces to fight workplace fatigue

Structure: Box-Spring Outer Edge Impact Absorbing Sponge

Style: Solid

**Position: 24/7 Shift operations
Heavy foot traffic in dry areas**

Colors: Black or Charcoal



Advanced Fatigue

ErgoDeck® MAX Our greatest innovation to date, combines the customization of ErgoDeck® with the comfort of our premium Nitricell® sponge! It delivers both structural support AND impact absorption for healthier, more productive employees, even in multi-shift operations.

Choose from our popular General Purpose pattern (**#598**) as shown, or our rugged Diamond-Plate Surface, (**#599**) or our Smooth Surface (**#600**) for pivoting and easy cleaning.



Underside

ErgoDeck® Diamond-Plate

Look for product family 590 and 591

Compound: General Purpose Compresses or Heavy Duty

Structure: Box-Spring Rugged, Industrial Diamond-Plate Surface

Style: Solid

**Position: 24/7 Shift operations
Heavy foot and light cart traffic areas**

Colors: Black or Charcoal



Slippery



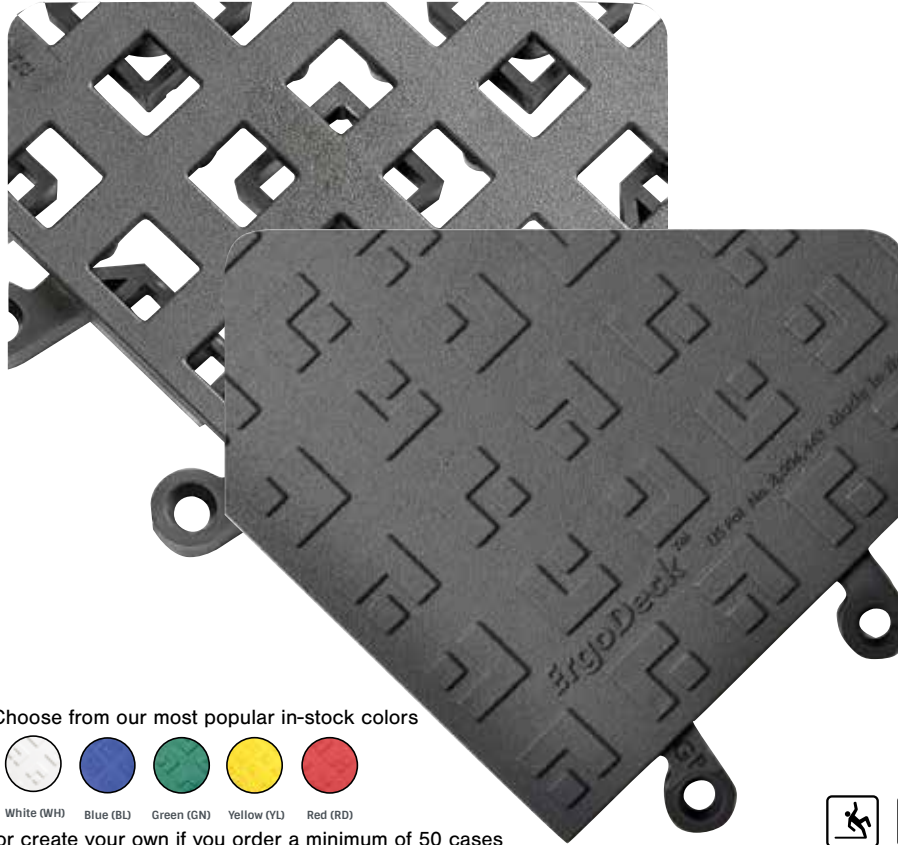
Advanced Fatigue

ErgoDeck® Diamond-Plate scores across the board.

The box-spring foundation compresses under foot providing anti-fatigue benefits and the necessary structure to support heavier traffic patterns. The All-Star Diamond-Plate surface pattern delivers dependable traction and gives you the Industrial look your facility has come to appreciate. All styles of ErgoDeck® connect together. So go ahead, mix and match with the ErgoDeck® that you already have in your facility!



GAME-DAY LINE-UP



Choose from our most popular in-stock colors



White (WH) Blue (BL) Green (GN) Yellow (YL) Red (RD)

or create your own if you order a minimum of 50 cases



ErgoDeck® General Purpose

Look for product families 564, 565, 566 & 567

Compound: Softer
Compresses under foot to fight fatigue

Structure: Box-Spring
Adds structure for heavier foot traffic patterns

Style: Solid or Drainage
Add GRITSHIELD™ for additional traction (Charcoal Only)

Position: Foot traffic in wet, dry or slippery environments

Colors: Black or Charcoal
#566 Additional In-Stock colors Blue, Red, Yellow, Green, Orange & White



ErgoDeck® Comfort

Look for product families 556 & 558

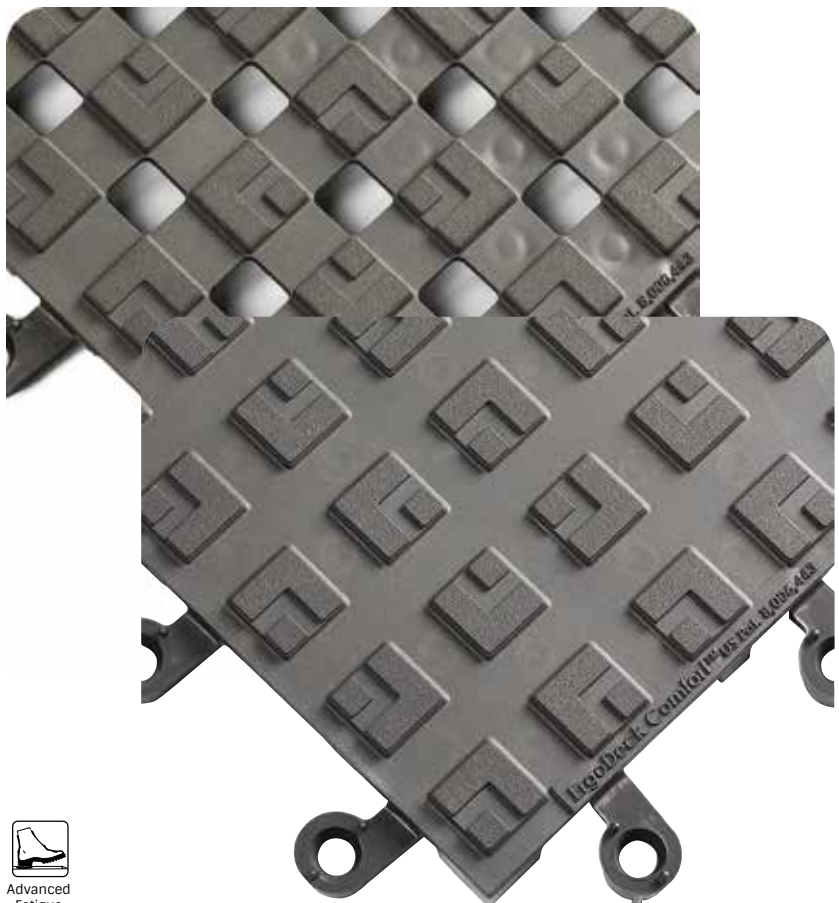
Compound: General Purpose
to fight fatigue

Structure: "Spring-only" design
compresses underfoot for rubber-like feel

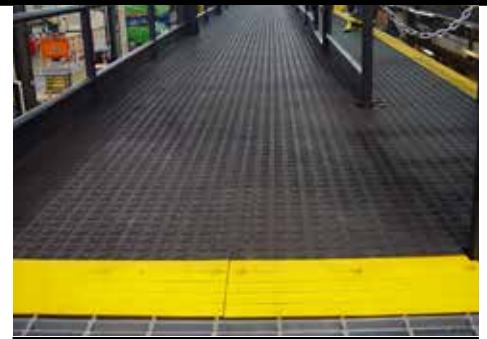
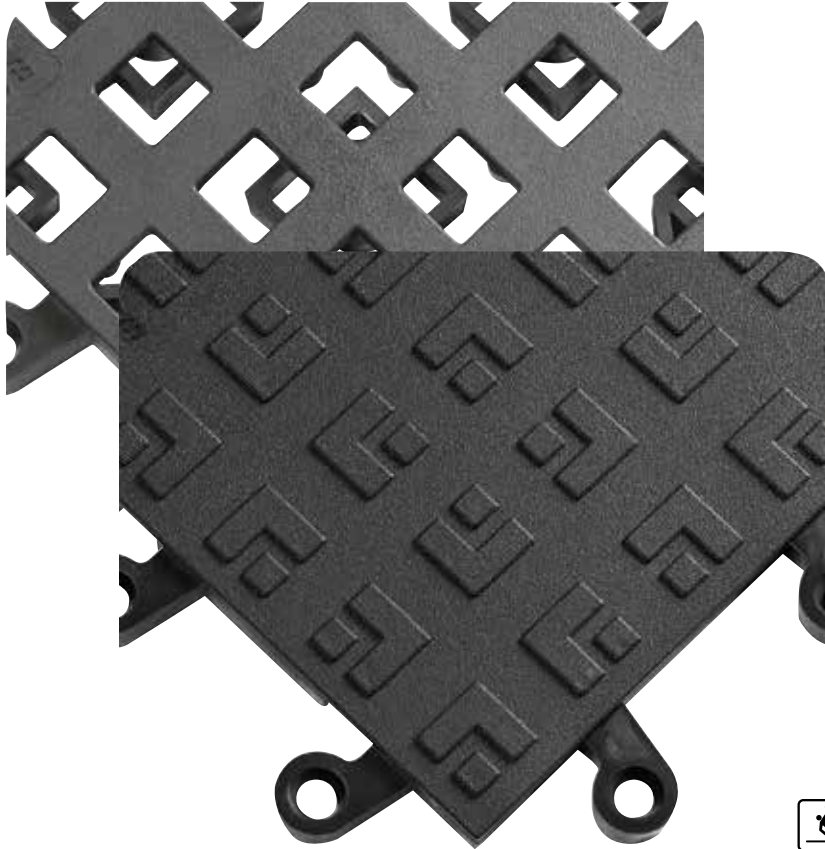
Style: Solid or Drainage

Position: Standing Employees
and light foot traffic

Colors: Charcoal



HEAVY HITTER



ErgoDeck® Heavy Duty

Look for product families 560, 561, 562, 563

Compound: Heavy Duty
Chemically Resistant

Structure: Box-Spring
Adds structure for heavier loads

Style: Solid or Drainage
Add GRITSHIELD™
for additional traction (Black Only)

Position: Heavy loads and foot traffic
in a wide range of tough environments
even over grating and catwalks

Colors: Black or Charcoal



Slippery

Wet



ErgoDeck® Smooth

Look for product family 568 & 569

Compound: General Purpose
or Heavy Duty Compound

Structure: Box-Spring
Adds structure for foot and
wheeled traffic

Style: Solid

Position: Standing, pivoting employees
and cart traffic

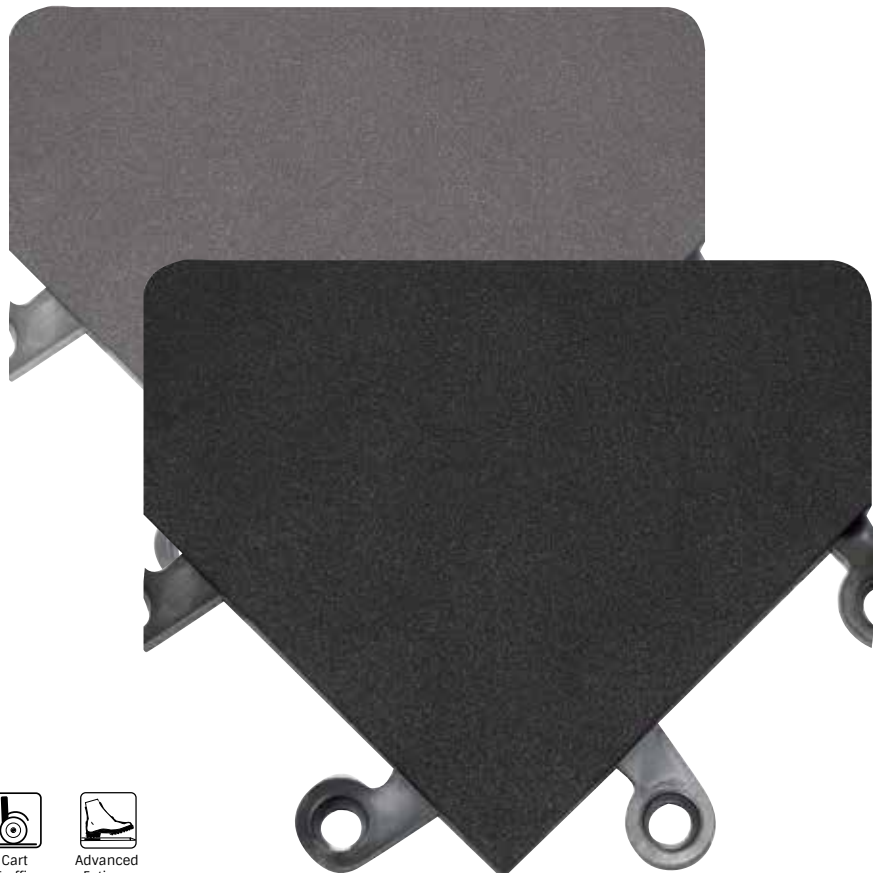
Colors: Black or Charcoal



Cart
Traffic



Advanced
Fatigue



SPECIAL TEAMS - IN HARSH ENVIRONMENTS

ErgoDeck® Integrated No-Slip Cleats

Look for product families 552 & 553

Compound: Heavy Duty, Chemically Resistant PVC with molded in No-slip Cleats

Structure: Box-Spring
Adds structure, support and can be installed over grating.

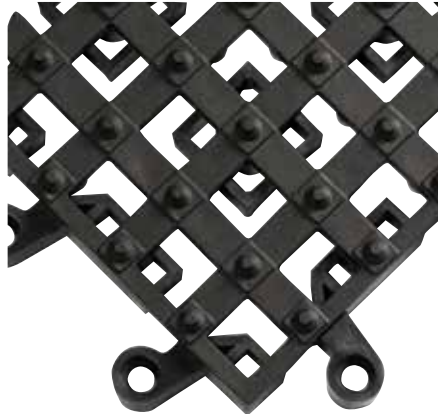
Style: Solid or Drainage

Position: Slippery, Harsh Environments

Colors: Black or Charcoal



Slippery Oily



ErgoDeck® Steel No-Slip Cleats

Look for product families 554 & 555

Compound: Heavy Duty, Chemically Resistant PVC with Steel Cleats

Structure: Box-Spring
Adds structure, support and can be installed over grating.

Style: Solid or Drainage

Position: Extremely Slippery, Harsh Environments (Perfect for oil rigs)

Color: Black

3-Year Warranty



SPECIAL TEAMS DEFENSE - ELECTRONIC MANUFACTURING

ErgoDeck® ESD

Look for product family 557

Compound: TPO/Carbon Blend
Ensures static dissipation

Position: Use over Conductive Sub-floor

Style: Solid

ESD Rating: E05/ESD S7.1: 1x10⁶-1x10¹⁰

Color: Black



1-Year Warranty



CREATE YOUR OWN HOME BASE

ErgoDeck® Workstation Kits -

Each ErgoDeck Kit has everything you need to set up an ergonomic workstation in minutes. ErgoDeck rivals most rubber mats for maintenance, chemical resistance and performance. No other interlock can touch the secure LockSafe® system! Regardless of the field of play, ErgoDeck Kits deliver!

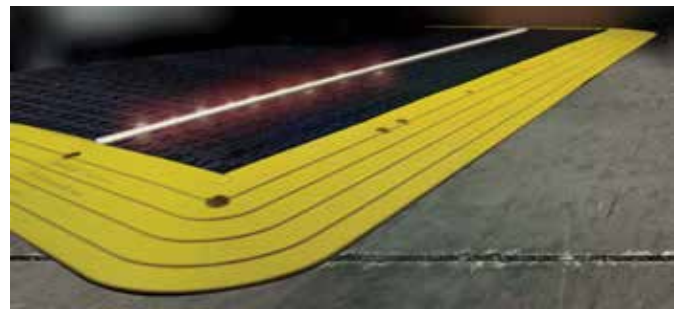
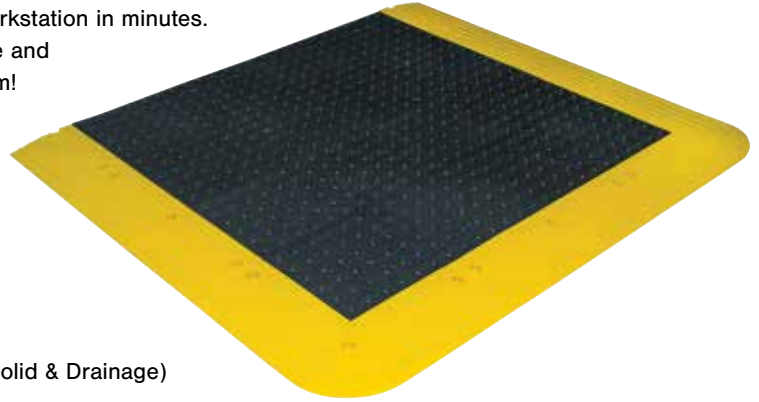
- Each kit contains enough tiles and ramps to build a workstation mat
- No tools or cutting required

We have KITS in 3 sizes

- 42" x 48" (107 cm x 122 cm)
- 42" x 66" (107 cm x 168 cm)
- 42" x 84" (107 cm x 213 cm)

KITS are available in 4 styles

- ErgoDeck® MAX
- Comfort Solid
- General Purpose Solid
- Integrated No-Slip Cleats (Solid & Drainage)



RAMP UP YOUR GAME!

ErgoDeck PVC or Aluminum Ramps, Corners and NEW! 6" Stripe w/LockSafe Connectors

Look for product family 560, 561, 566-ED6

- 6" (15 cm) wide ramps
- Prevent trip hazards
- Allows easy on/off access for wheeled traffic
- Provides a visual cue to change in plane
- PVC Colors: Black & Yellow
- NEW! Aluminum are high-strength, lightweight and they are chemical resistant

LockSafe® Connectors

- Expand the customability of all ErgoDeck® flooring and ramps!
- Easily connect any to male connection points with a LockSafe® Connector



ErgoDeck® Illuminate System

A Bright Idea from Wearwell

ErgoDeck® Illuminate (#566-LED) tiles offer a convenient way to lighten up poorly lit work areas from the floor up. Each tile can accommodate up to five Illuminate channels. The system is extremely simple, flexible and cost effective. Wearwell provides the customized ErgoDeck tiles, the aluminum channel and the protective clear or frosted lens for the channel. The customer chooses the LED lighting (sold separately) from the huge array of options available in the marketplace.

- Aluminum Channels
- Clear or frosted protective cover
- Improves visibility
- Supports quality assurance



ERGODECK® LIFETIME INNOVATION

2004	2006	2007-2010	2012	2013	2014	2017	2018	2019
ErgoDeck® Original US Patent # 8,006,443 US Patent # D520,650	ErgoDeck® General Purpose US Patent # D520,650	ErgoDeck® Colors	ErgoDeck® Comfort US Patent # D681,993 US Patent # D696,874 ErgoDeck® w/Steel No-Slip Cleats	ErgoDeck® w/Integrated Cleats US Patent # D704,961 US Patent # D740,591	ErgoDeck® ESD ErgoDeck® Smooth ErgoDeck® Workstation Mat Kits	ErgoDeck® Diamond-Plate US Patent # 8,006,443	ErgoDeck® MAX Patent Pending	ErgoDeck® Illuminate

Learn more @ Wearwell.com/ErgoDeckFlooring

SIMPLE GAME-WINNING STRATEGY



Even the best coaches are faced with challenges. You don't have to go it alone! Tackle them with one of our global team of experts. Using state of the art tools, they'll come to your facility, assess your areas of concern and create a game plan specific to your goals, initiatives and budget.

The Wearwell Site-Survey

Know you need matting but not sure what? We'll give you a comprehensive site-survey of exactly what you need in your facility..



The Field Assessment

Our one of a kind app delivers a customized report based on your unique operations and workforce. Let us show you how much Wearwell matting and flooring can save you, and how quickly you can see a return on the investment.

	Year 1	Year 2	Year 3	Year 4
Investment in Wearwell Product	\$ 20,000			
Average Total Cost of Injury	\$ 103827.5	\$ 103827.5	\$ 103827.5	\$ 103827.5
Cost of Absenteeism	\$ 312,000	\$ 312,000	\$ 312,000	\$ 312,000
Annual Injury Savings	\$ 51,914	\$ 51,914	\$ 51,914	\$ 51,914
Annual Absenteeism Savings	\$ 15,600	\$ 15,600	\$ 15,600	\$ 15,600
Grand Total Savings per Year	\$ 67,514	\$ 67,514	\$ 67,514	\$ 67,514
ROI - Cumulative	230%	575%	913%	913%
Payback period in years - Cumulative	0.3	0.15	0.1	0.1

Why wait? Contact your local representative and learn today how you could be working toward saving tomorrow.

Wearwell.com/replocator



WEARWELL®

For more information on Wearwell hike on over to our website @ Wearwell.com

NORTH AMERICA

Wearwell, LLC (Headquarters)
Phone: 615.254.8381
or 1.800.264.3030
info@wearwell.com
wearwell.com

MEXICO
wearwell.com/mx
CANADA
wearwell.com/ca

EUROPE

Wearwell Europe LTD
Phone: 44 1525 307271
info@wearwell-europe.co.uk

UK & IRELAND
wearwell.com/uk
FRANCE
wearwell.com/fr
GERMANY
wearwell.com/de